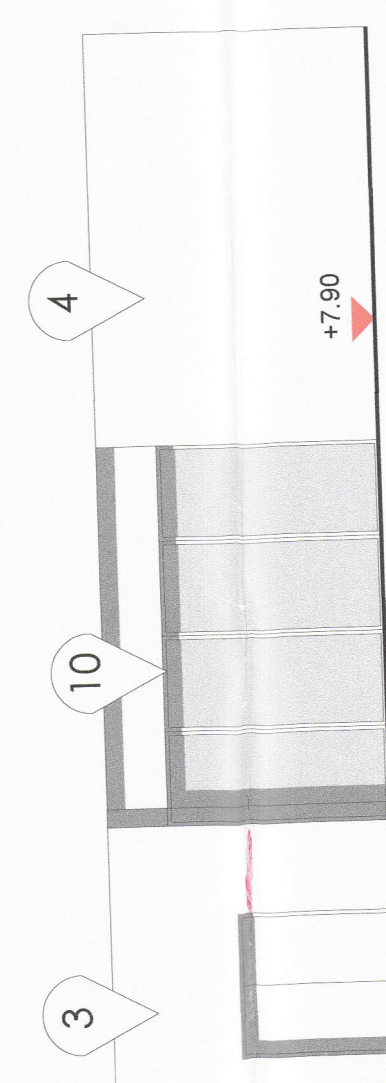


EXISTING RETAIL [TK MAXX]
 PROPOSED SECTION 13
 1:100@A1



HOTEL KIDS ZONE RETAIL A1 / A2

PROPOSED SECTION 14
 1:100@A1

Planning Act
 (NY) 2011
GRANTED
 Subject to Conditions (if any)
 as set out in
 A 0 6 2 0 2 0 / 0 0 9 7
 Decision Number
 5

- 5
1. Fibre Cement Slate Roof
 2. Metal Rainscreen Cladding
 3. Recycled Brickwork
 4. Recycled Stone Cladding
 5. Metal Rainscreen Cladding
 6. Self Coloured Render
 7. Metal Louvre Screen
 8. Metal Louvre Screen
 9. PPC Aluminium Windows/Doors
 10. Painted Metal Cantilevered Balconies
 11. Painted Metal Cantilevered Balconies
 12. Timber Louvres
 13. Metal Canopy
 14. Glass Cladding with Timber/Steel Structure
 15. Glass Cladding
 16. Glass Cladding
 17. Ex. Brickwork Painted

Drawing Number
 55A

12 DEC 2019

NO.	DATE	BY	CHKD.	REVISION
1	20.08.19			Issued for I.P.
2				
3	23.09.20			Issued for Planning
4	26.11.20			Block is returned for issue to

PLANNING	AC	NM	AC	NM	AC	NM	AC	NM
PLANNING	AC	NM	AC	NM	AC	NM	AC	NM
06/09/2019	AC	NM	AC	NM	AC	NM	AC	NM
1:200	A0							

TODD
 BANGOR MARINE
 QUEEN'S PARADE, BANGOR
 Proposed Section 13 & 14
 13017-098-TODD-ZZ-DR-A-00013 004
 © TODD ARCHITECTS LTD All Rights Reserved