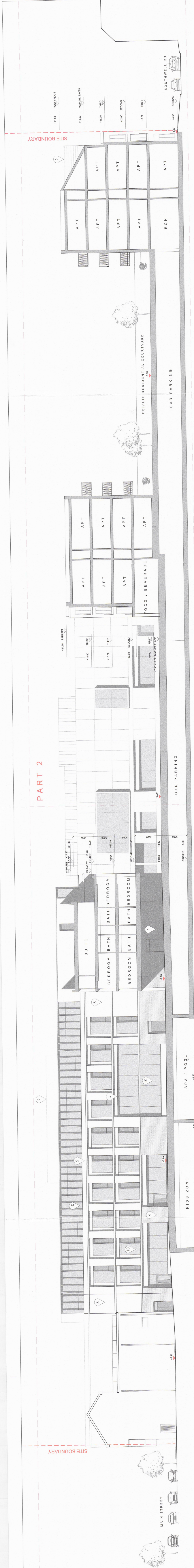
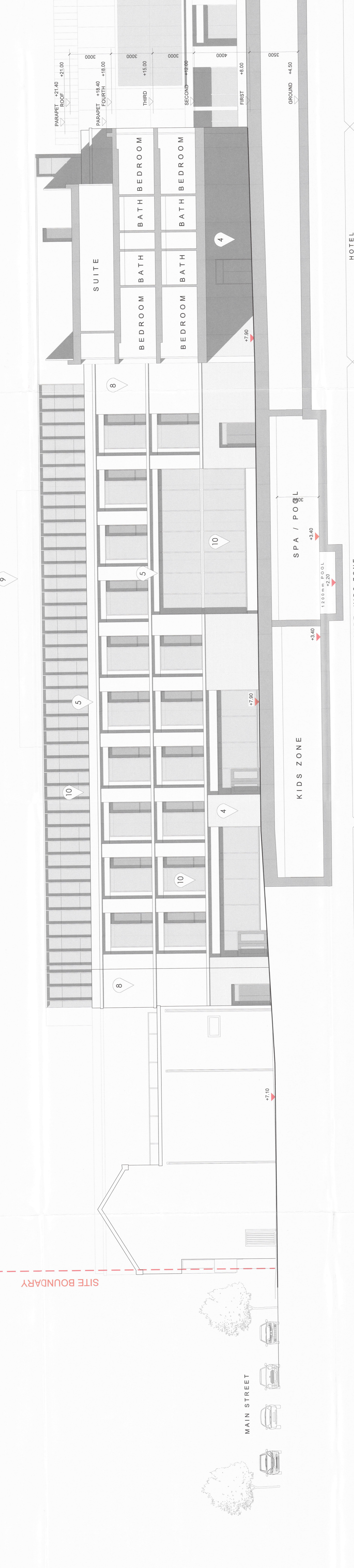


PART 1

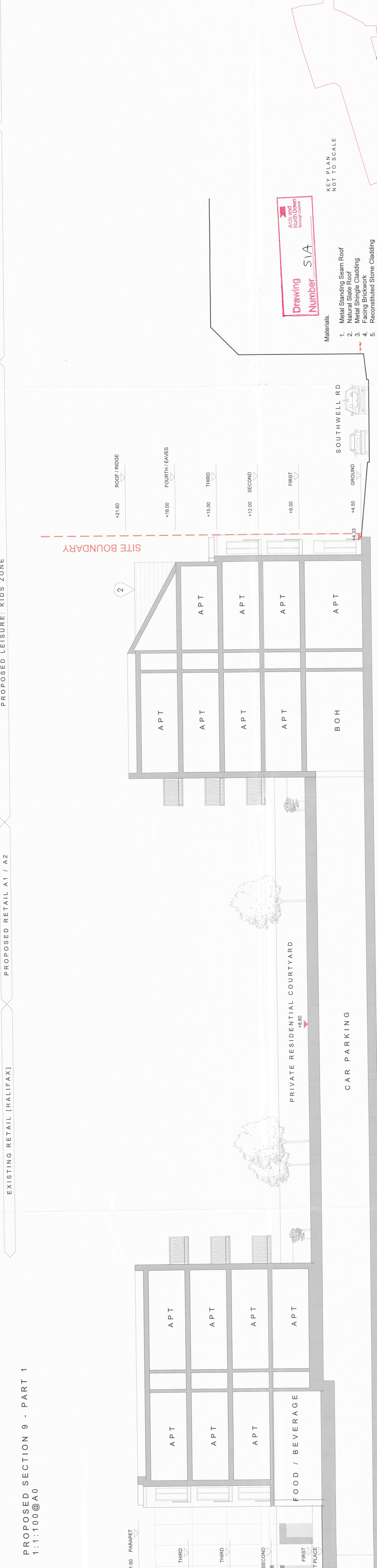
PART 2



PROPOSED SECTION 9
1:200@A0



PROPOSED SECTION 9 - PART 1
1:1:100@A0



PROPOSED SECTION 9 - PART 2
1:1:100@A0

Materials:

1. Metal Standing Seam Roof
2. Natural Slate Roof
3. Metal Shingle Cladding
4. Facing Brickwork
5. Reconstituted Stone Cladding
6. Metal Rainscreen Cladding
7. Painted Aluminium Windows/Doors
8. Self Coloured Render
9. Metal Louvered Screen
10. PPC Aluminium Windows/Doors
11. Painted Metal Balustrades
12. Timber Louvers
13. Glass Canopy with Timber/Steel Structure
14. Glass Canopy with Timber/Steel Structure
15. Shapfront

Drawing Number SIA
North Down
Brought Forward

KEY PLAN
NOT TO SCALE



Planning Act 18: Shapfront

GRANTED
Subject to Conditions (if any)
as set out in 06/20/009

Decision form No. 06/20/009

29 SEP 2020

North Down
Brought Forward

© TODD PARTNERSHIP All rights reserved

DATE	DESCRIPTION	BY	SCALE
06/09/2019	PLANNING PERMISSION TO PROCEED	AC NM	AS SHOWN
06/09/2019	FOR PERMISSION TO PROCEED	AC NM	AS SHOWN
19/06/19	BLOCK MARKING	AC NM	AS SHOWN
19/06/19	PLANNING ISSUE	AC NM	AS SHOWN
17/07/08	PLANNING ISSUE	AC NM	AS SHOWN

TODD PARTNERSHIP
BANGOR MARINE
QUEEN'S PARADE, BANGOR
Proposed Section 9