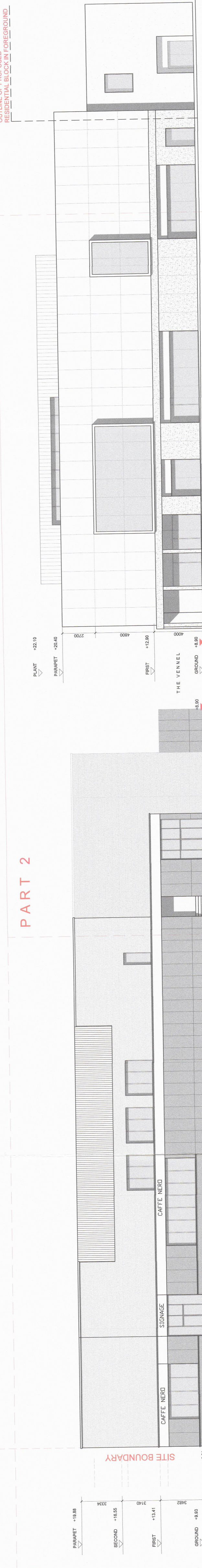
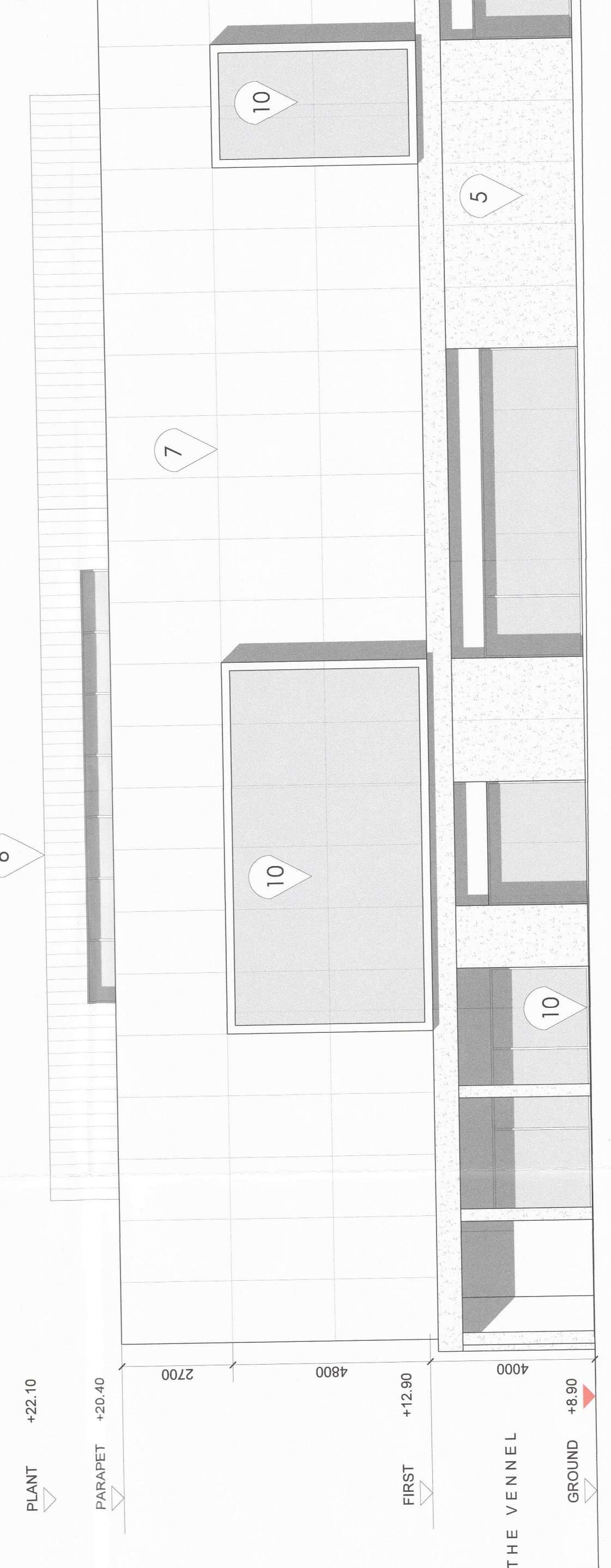


PART 1

PART 2



PROPOSED SECTION 7
1:200@A1



PROPOSED ELEVATION 7 - PART 1
1:100@A1

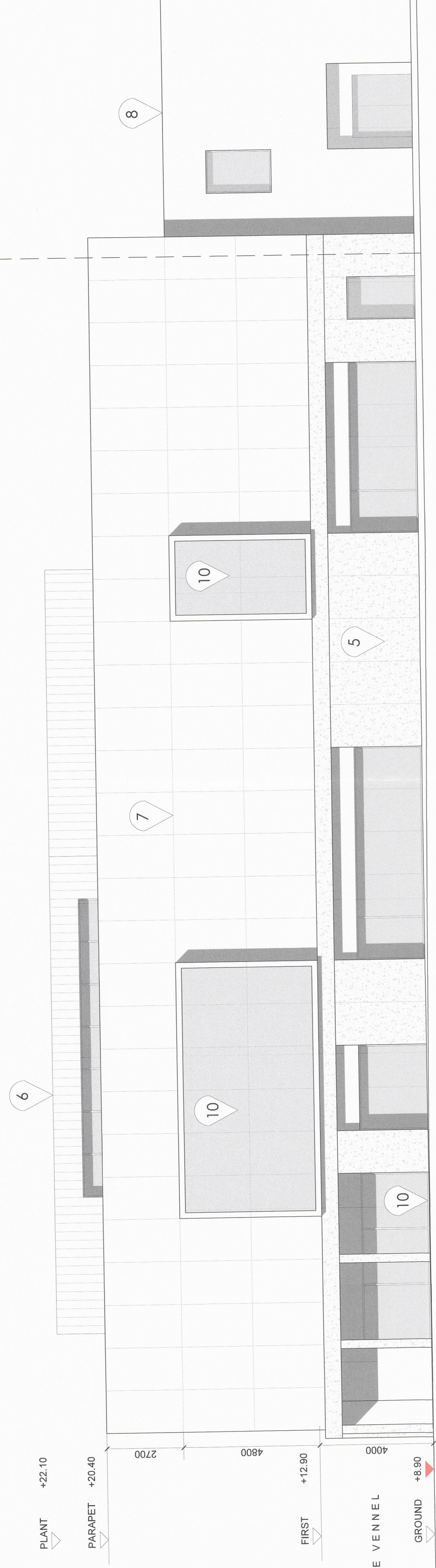
EXISTING FOOD / BEVERAGE. NEW OFFICE ABOVE

CAFFE NERG
SIGNAGE
CAFFE NERG
THE VENNEL

EXISTING FOOD / BEVERAGE. NEW OFFICE ABOVE

CAFFE NERG
SIGNAGE
CAFFE NERG
THE VENNEL

PROPOSED ELEVATION 7 - PART 2
1:100@A1



CAFFE NERG
SIGNAGE
CAFFE NERG
THE VENNEL

PROPOSED ELEVATION 7 - PART 2
1:100@A1

- Materials:
1. Metal Standing Seam Roof
 2. Metal External Cladding
 3. Metal Upright Cladding
 4. Polycarbonate Cladding
 5. Metal Rainscreen Cladding
 6. Metal Rainscreen Cladding
 7. Self Coloured Blister
 8. PVC Aluminium Window/Doors
 9. PVC Aluminium Window/Doors
 10. Framed Metal Balustrades
 11. Framed Metal Balustrades
 12. Timber Louver
 13. Timber Louver
 14. Glass Canopy with Timber/Steel Structure
 15. Glass Canopy with Timber/Steel Structure
 16. Skillion Awning
 17. Bitumen Sheet

Planning Act (NI) 2011
GRANTED
Subject to Conditions (if any)
as set out in Section 5
Date: **23 SEP 2022**

Drawing
Number: **4-9A**
1/20/0097



TODD
BANGOR MARINE
QUEEN'S PARADE, BANGOR
Proposed Section 7

Item	Area	Description
1	25.11.18	25.11.18
2	25.11.18	25.11.18
3	25.11.18	25.11.18

DECLARATION: I, the undersigned, being a qualified Architect in the Republic of Ireland, hereby certify that this is a true and correct copy of the drawings as submitted to the Planning Authority for consideration. I also declare that I am not a party to any arrangement which might lead to a conflict of interest in relation to this application.