

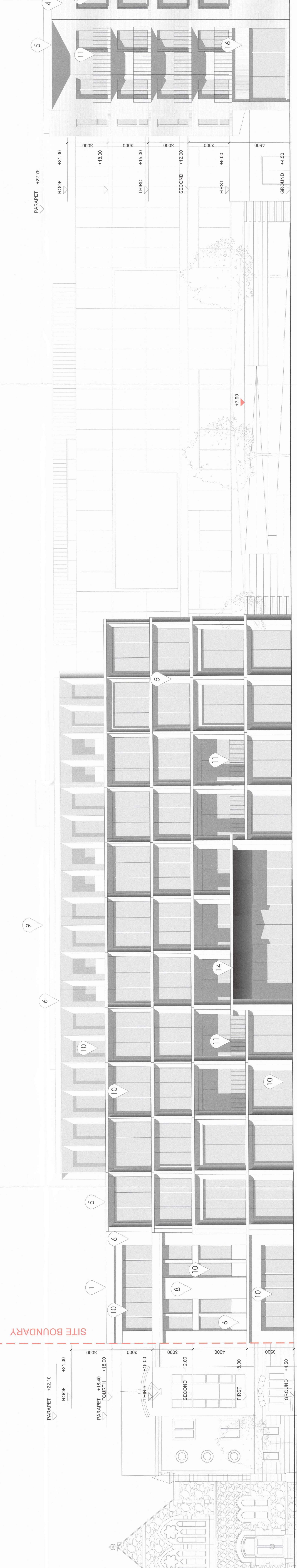
PART 1

PART 2



PROPOSED ELEVATION 2 [QUEEN'S PARADE]
1:200@A0

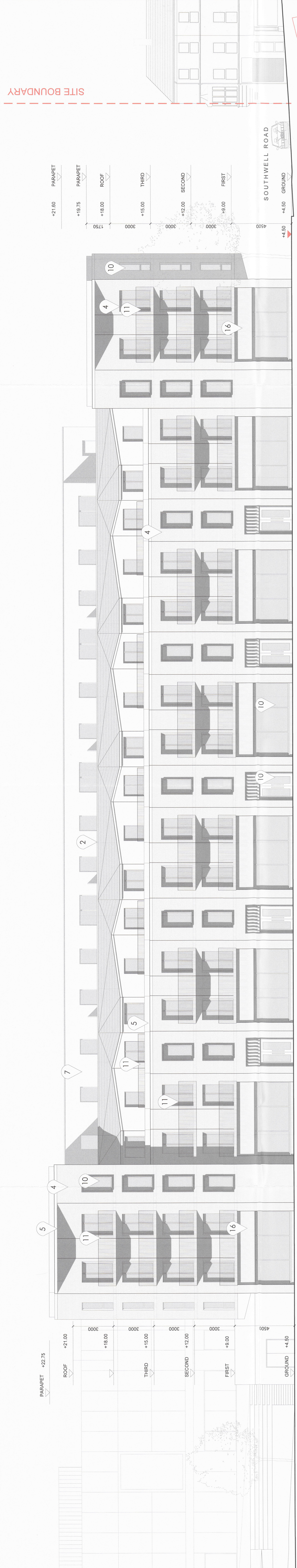
RESIDENTIAL APARTMENTS



[EXISTING CHURCH] [EXISTING COMMUNITY CENTRE (KIDS ZONE (HOTEL ABOVE))] HOTEL

PUBLIC REALM (CINEMA BEHIND)

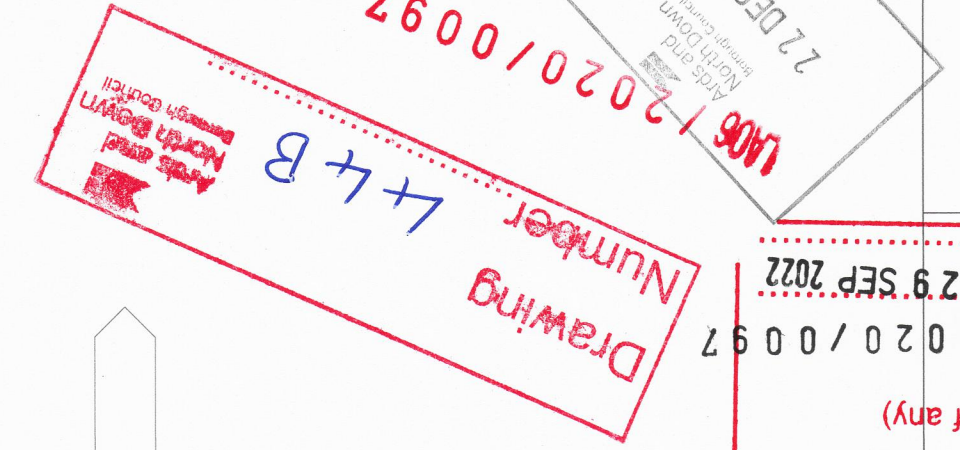
PROPOSED ELEVATION 2 - PART 1 [QUEEN'S PARADE]
1:100@A0



RESIDENTIAL APARTMENTS

PROPOSED ELEVATION 2 - PART 2 [QUEEN'S PARADE]
1:100@A0

- Materials:
1. Metal Standing Seam Roof
 2. Fire Cement Slate Roof
 3. Concrete Slab
 4. Fibreglass Cladding
 5. Reconstituted Stone Cladding
 6. Fire Cement Pantheon Cladding
 7. Fire Cement Pantheon Cladding
 8. Self Coloured Render
 9. Fire Cement Pantheon Cladding
 10. PPC Aluminium Windows/Doors
 11. Painted Metal Balustrade
 12. Painted Metal Balustrade
 13. Timber Ladders
 14. Metal Canopy
 15. Metal Canopy with Timber Slats
 16. Slipped Slating



GRANTED
Subject to conditions (if any)
Decision from 14/06/2020/097
Date: 29 SEP 2022
Drawing Number: L4/B
27 DEC 2020

TOOD ARCHITECTS
100 COOPER STREET
MELBOURNE VIC 3000
PH: 03 9429 8888
WWW.TOODARCHITECTS.COM.AU

BANGOR MARINE
QUEEN'S PARADE, BANGOR
Proposed Queen's Parade Elevation

NO.	DATE	REVISIONS	BY	CHKD	APP'D
1	20/09/2019	AC	NM	AO	
2	20/09/2019	AC	NM	AO	
3	20/09/2019	AC	NM	AO	
4	20/09/2019	AC	NM	AO	
5	20/09/2019	AC	NM	AO	
6	20/09/2019	AC	NM	AO	
7	20/09/2019	AC	NM	AO	
8	20/09/2019	AC	NM	AO	
9	20/09/2019	AC	NM	AO	
10	20/09/2019	AC	NM	AO	
11	20/09/2019	AC	NM	AO	
12	20/09/2019	AC	NM	AO	
13	20/09/2019	AC	NM	AO	
14	20/09/2019	AC	NM	AO	
15	20/09/2019	AC	NM	AO	
16	20/09/2019	AC	NM	AO	

© 10000 Architects Ltd. All Rights Reserved.