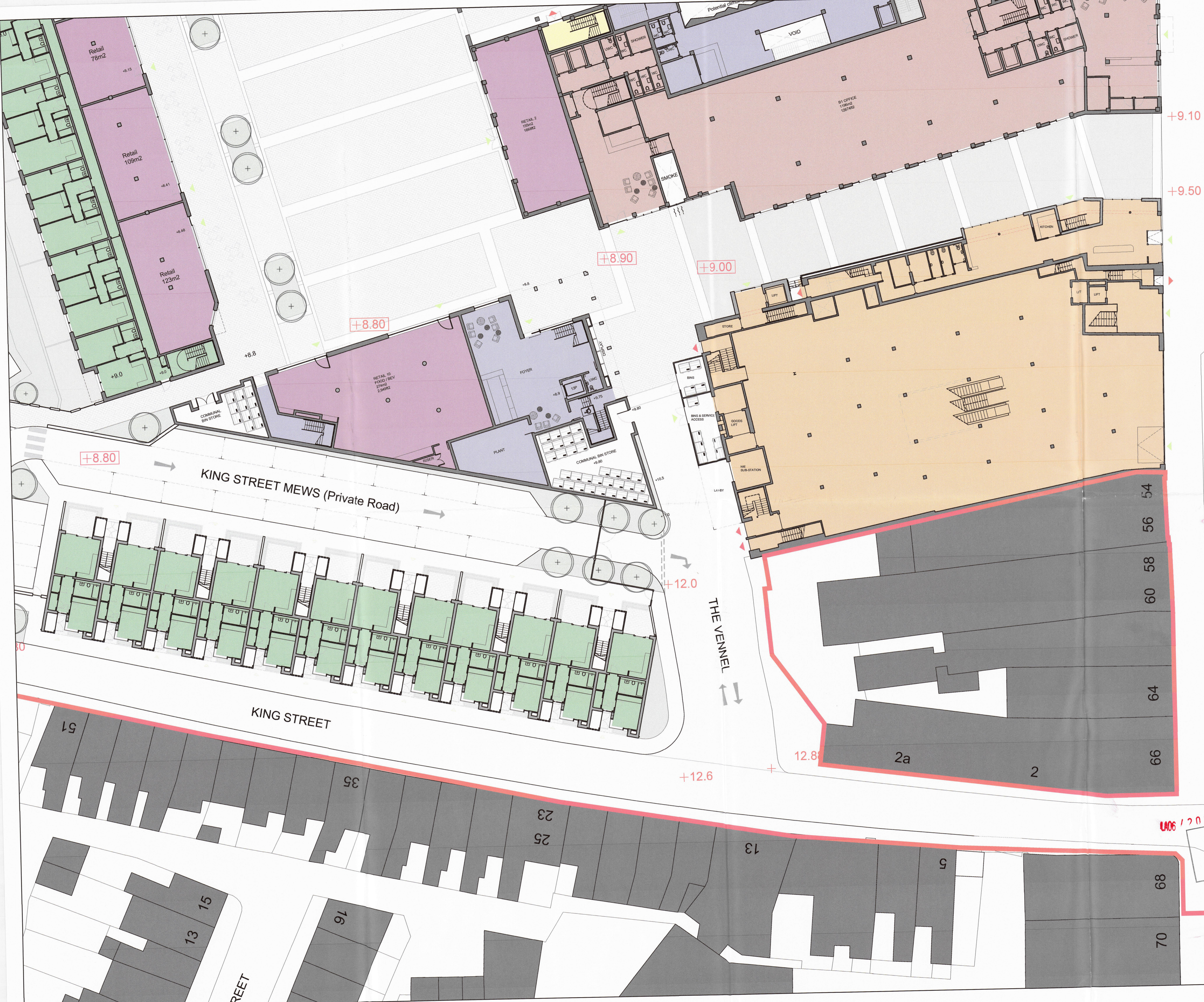


DISCLAIMER:
 TODD ARCHITECTS CONFIRM THAT RECIPIENTS CAN ONLY RELY ON APPROVED CONTROLLED DOCUMENT FORMATS IN CONSTRUCTION PROJECTS. CONTROLLED DOCUMENT FORMATS INCLUDE ORIGINAL HARD COPY DRAWINGS ISSUED BY TODD ARCHITECTS, OR UNPRINTED PDF/DWG IMAGES OF DRAWINGS RECEIVED FROM TODD ARCHITECTS. TODD ARCHITECTS CANNOT ENSURE THE ACCURACY OF DRAWINGS USED IN AN UNCONTROLLED DOCUMENT FORMAT WHICH MAY BE ALTERED OR MISINTERPRETED AS A RESULT OF THE INCOMPATIBILITY OF COMPUTER SYSTEMS WHEN OPENING OR PRINTING COMPUTER AIDED DRAWINGS. UNCONTROLLED DOCUMENT FORMATS INCLUDE COMPUTER AIDED DESIGN FILES, PRINTS WHICH HAVE BEEN CREATED BY THE RECIPIENT FROM NON-CONTROLLED FILE FORMATS, PHOTOCOPIES OF ORIGINAL HARD COPY DRAWINGS FROM TODD ARCHITECTS, DRAFT DRAWINGS SUPPLIED BY TODD ARCHITECTS FOR INFORMATION PURPOSES ONLY. TODD ARCHITECTS ACCEPT NO RESPONSIBILITY FOR ANY LOSS OR DAMAGE ARISING AS A RESULT OF RELIANCE BY THE RECIPIENT OR ANY THIRD PARTY ON UNCONTROLLED DOCUMENT FORMATS RELIANCE UPON WHICH WILL BE ENTIRELY AT THE RISK OF THE RECIPIENT.
 CONTRACTORS ARE RESPONSIBLE FOR THE VERIFICATION OF ALL DIMENSIONS ON SITE AND THE ARCHITECT IS TO BE INFORMED OF ANY DISCREPANCY. USE FIGURED DIMENSIONS ONLY.



8.2

MAIN STREET

+10.7

TCB

Planning Act (NI) 2011
 Ards and North Down Borough Council
GRANTED
 Subject to Conditions (if any) as set out on
 Decision No. LA.06/2.0.2.0./7.0.0 97
 Date: 29 SEP 2022

Drawing Number 27B
 Ards and North Down Borough Council

05	18.12.20	Red Line amended	AC	NM
04	-	Block 6 amended for submission to Planning Authority	AC	NM
03	06.07.20	Blocks 1&2 amended for submission to Planning Authority	AC	NM
02	23.01.20	Issued for Planning Approval	AC	NM
01	02.12.19	Client Issue	AC	NM

LA06/2020/0097
 Ards and North Down Borough Council
 22 DEC 2020

Client: Bangor Marine Ltd
 Project Name: Queen's Parade, Bangor
 Drawing Title: Proposed Block 04, 07, 10 - Residential, Retail & Cinema. [Level 01 - Podium]
 TODD ARCHITECTS
 2ND FLOOR TITANIC HOUSE
 8 QUEEN'S ROAD
 BELFAST, BT3 8QY
 T: +44 (0) 28 2604 5567
 E: INFO@TODDARCH.CO.UK
TODD
 Date: 02.12.2019
 Drawn by: AC
 Checked by: NM
 Scale: 1:200
 Project No: 17017
 Status: PLANNING
 Page: A1
 Revision: 005
 Drawing Number: QPB-TODD-04-01-GA-A-200-002
 © TODD Architects Ltd All rights reserved